

GLOBAL EAST ASIA TECHNOLOGY CO.,LTD

P/N: GLZ801 2.4G+5.8G Antenna

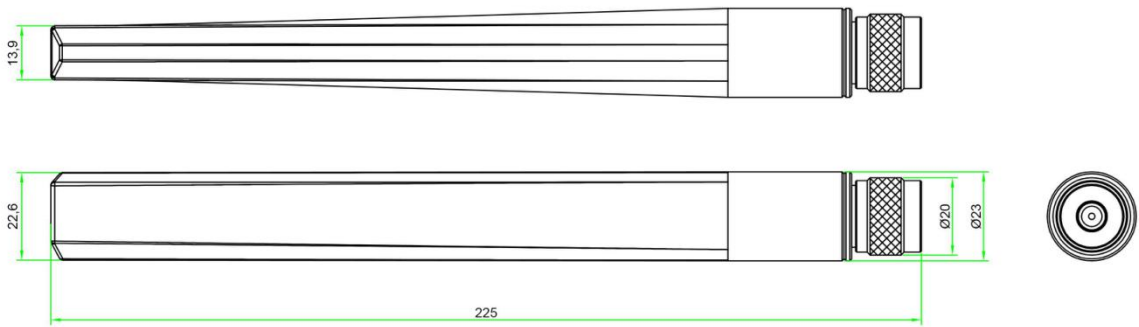
Electrical specifications

Frequency range (MHz)	2400~2500	5150-5875
Gain (dBi)	5	8
Polarization	Vertical	
Impedance (Ω)	50	
Max Power (W)	50	
VSWR	≤ 3.0	≤ 3.0

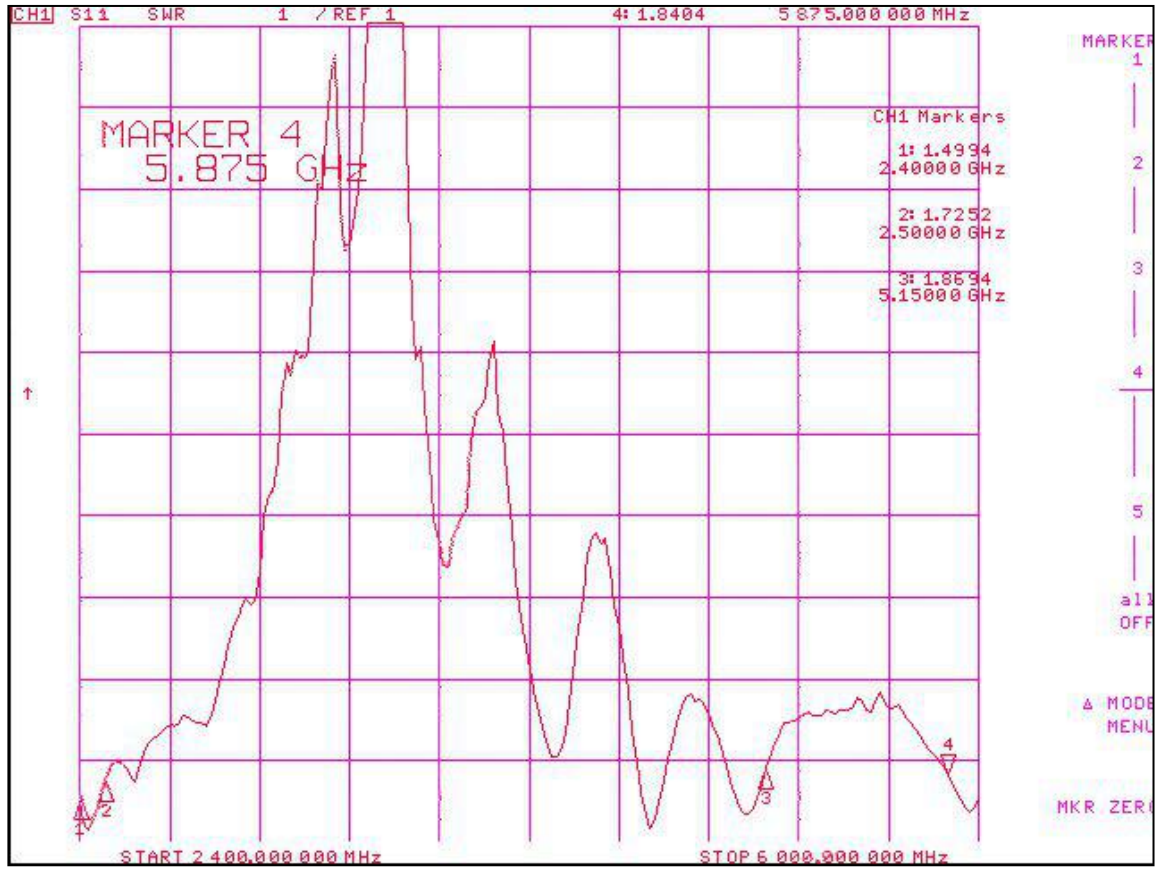
Mechanical specifications

Connector	N Male
Height (mm)	225
Color	gray
Weight(g)	57
Temperature ($^{\circ}\text{C}$)	-30~70
Humidity (%)	5~95

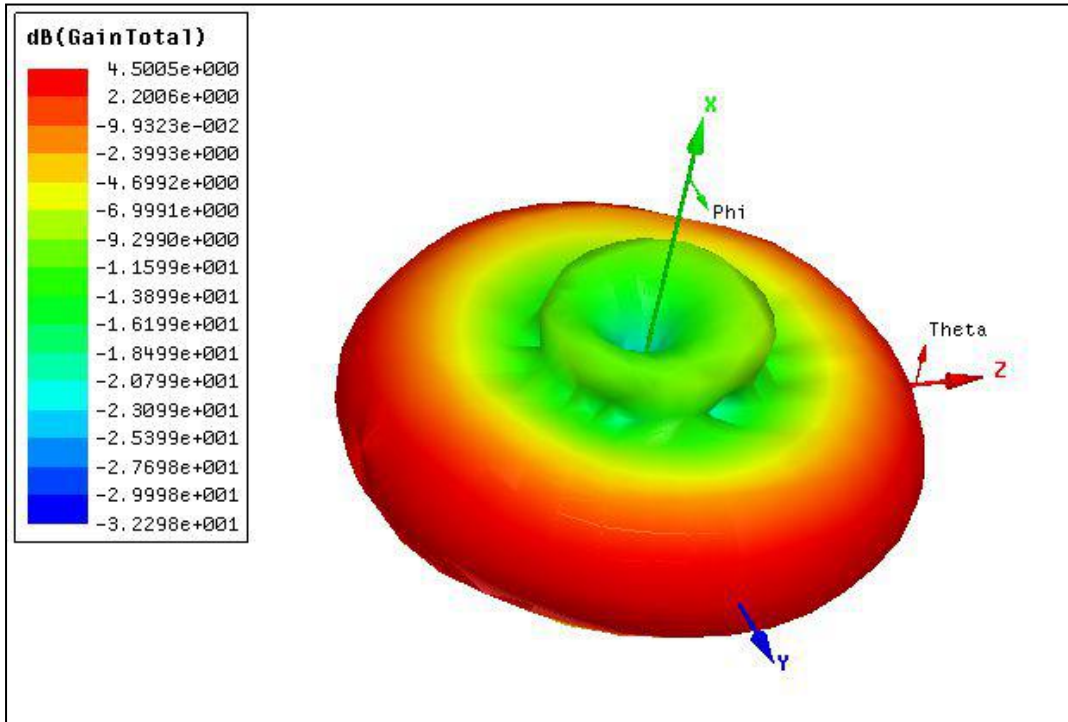
Product drawings



V.S.W.R Testing Data

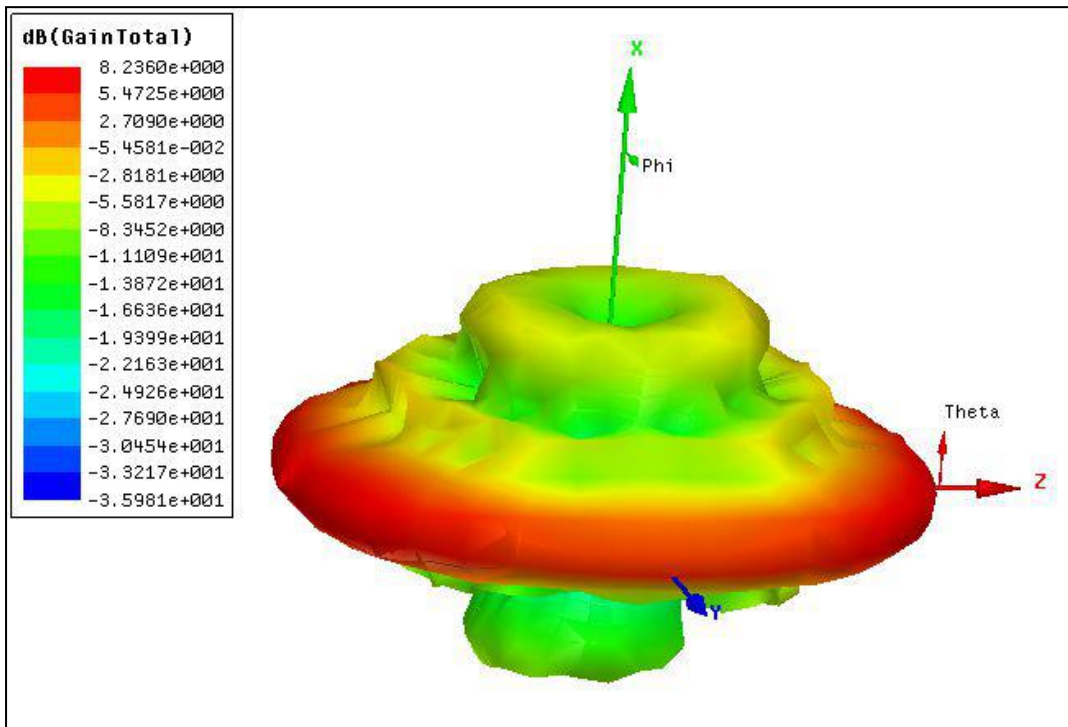


Gain



2450MHz

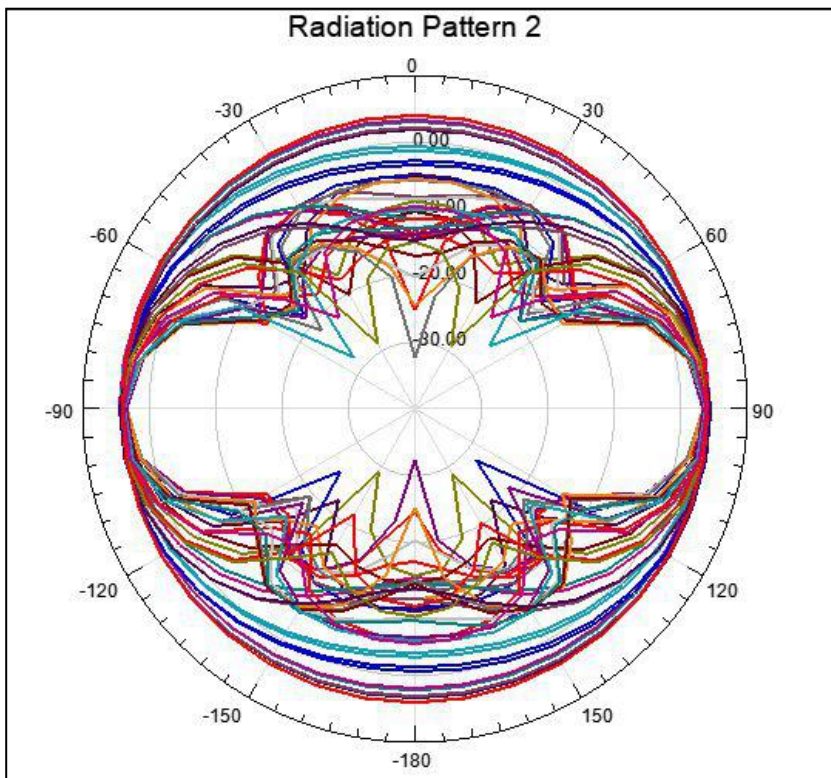
Gain:4.5dB



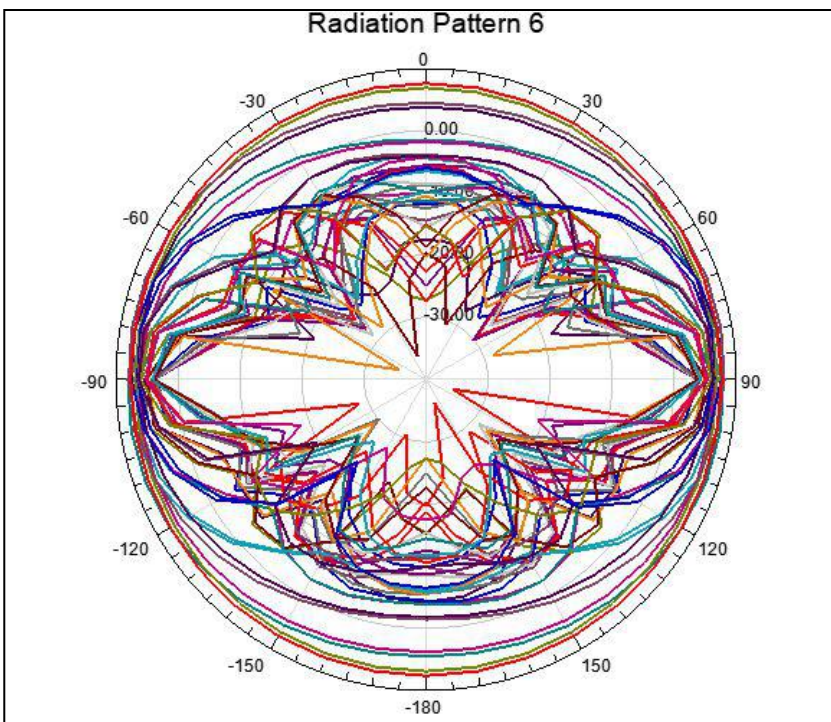
5500MHz

Gain:8.2dB

Radiation Pattern

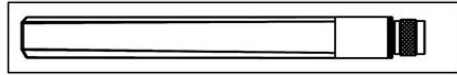
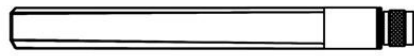


2450MHz

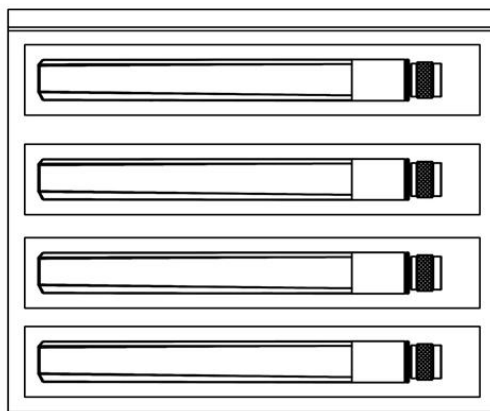


5500MHz

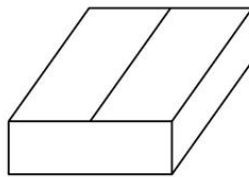
Packing



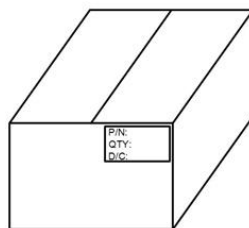
1PCS ANTENNA INTO A BAG



10PCS ANTENNAS INTO A BIG BAG



50PCS ANTENNAS INTO A INNER BOX



3 INNER BOXES INTO A OUTBOX