

Global East Asia Technology Co.,Ltd

Zhengzhou Leheng Electronic Technology Co.,Ltd

Service-first, Integrity-based, Quality-Oriented

Principle: Innovation, Pragmatic, Efficient, Win-Win!



Tel:86-371-60911368

Email: sales@global-antenna.com

Add: Room 826, Floor 8,BLDG 13, University Science Park(East), Zhengzhou City,P.R.Henan,China. Zip Code: 450000

Web: <https://www.global-antenna.com> <https://www.asaialeren.com>



Office BLDG



Smart City
Better Life

4G

3G

5G

Wi-Fi

大学科技园



Office Team

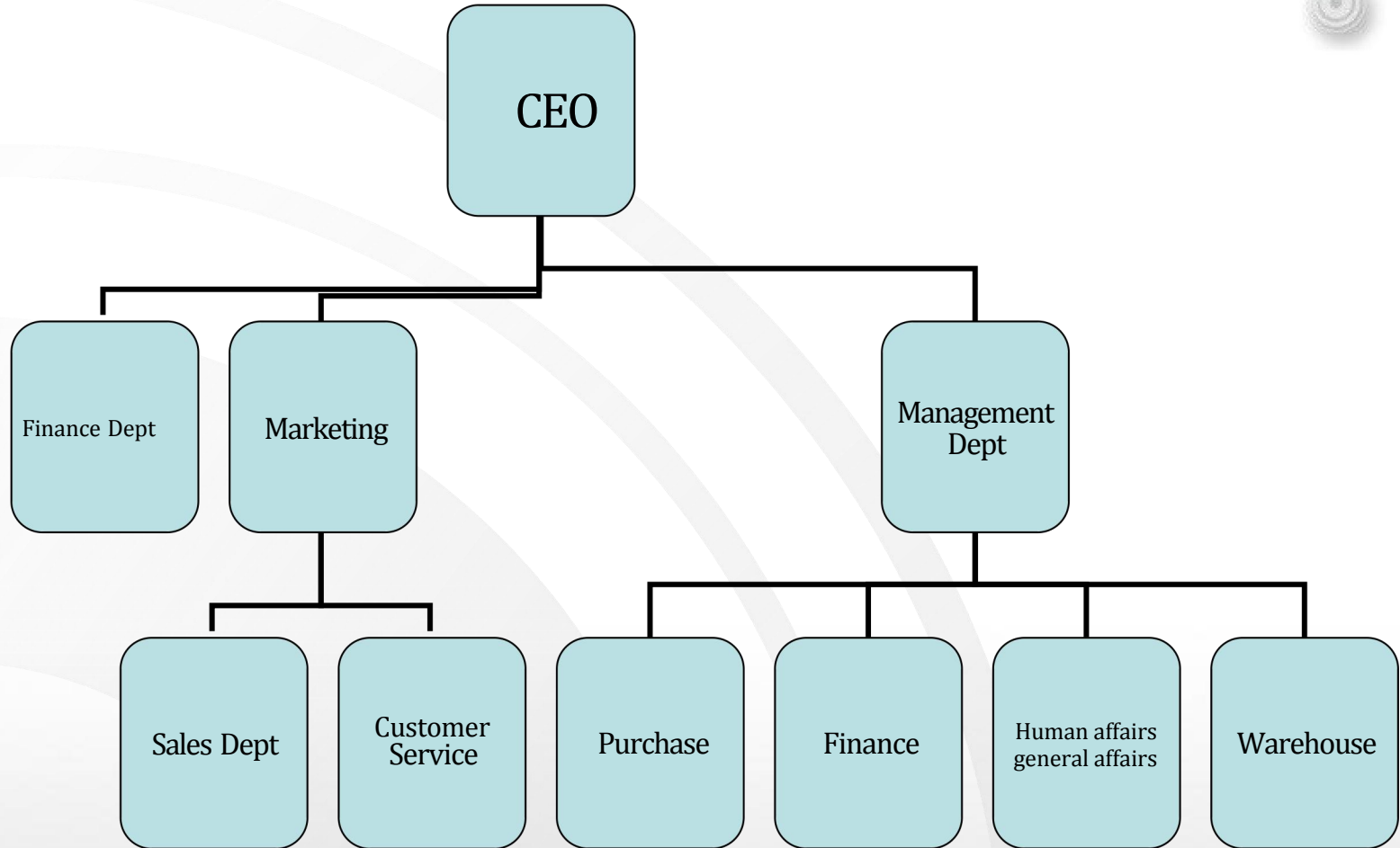


Professional Wireless Solutions Team - Leheng

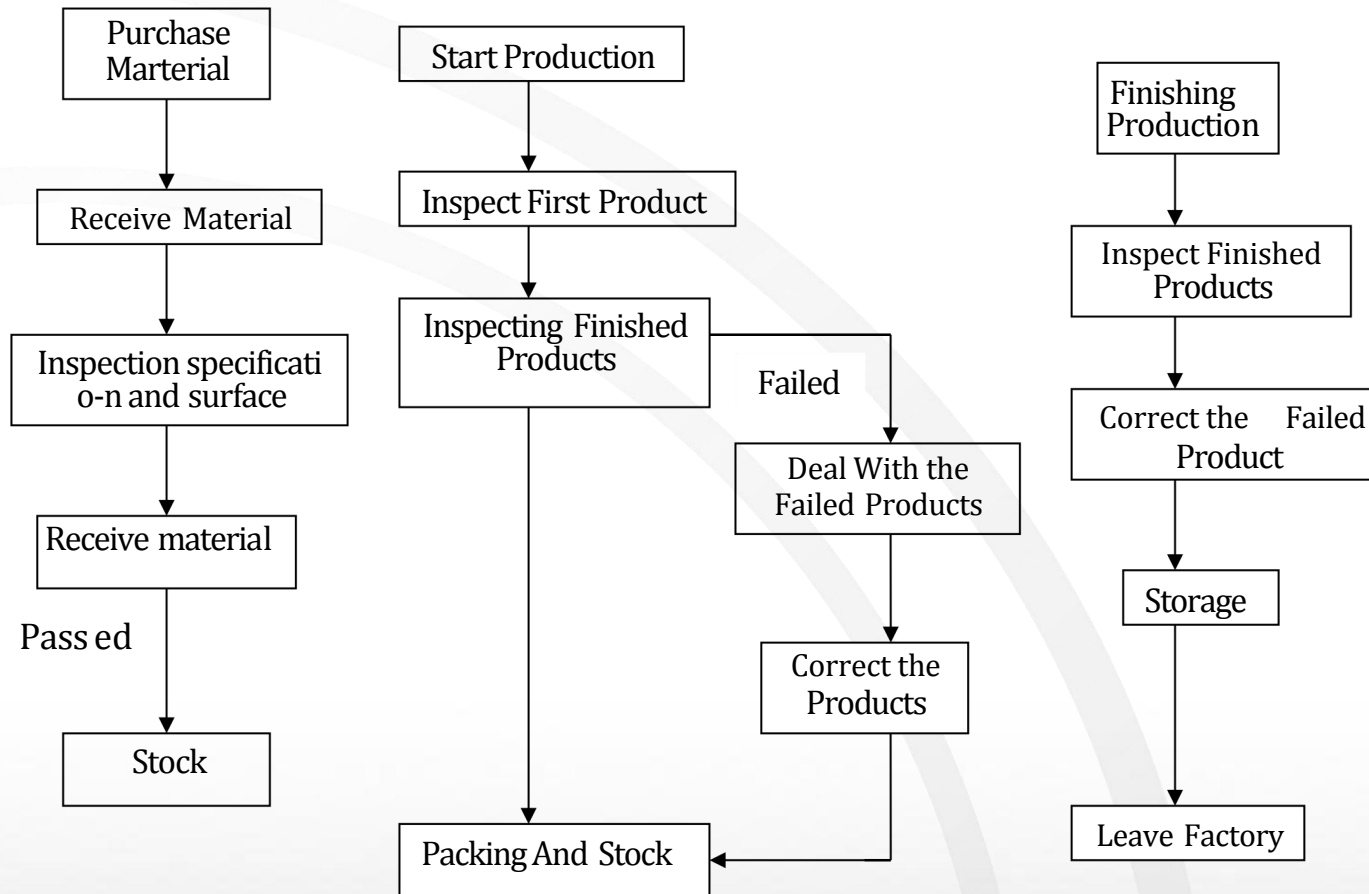
Our Partner

AURORA VITA BENELEC

Organization Chart



Quality Control Chart



HDTV INDOOR ANTENNA



PN	GL-DVB-T
Frequency Range (MHz)	470-862
Impedance (Ω)	75
V.S.W.R	≤ 1.5
Gain (dBi)	5-8db

PN	GL-1036
Frequency Range (MHz)	47-862
Impedance (Ω)	75
V.S.W.R	≤ 1.5
Gain (dBi)	8-10



HDTV INDOOR ANTENNA



PN	GL-3319
Frequency Range (MHz)	174-862
Impedance (Ω)	75
V.S.W.R	≤ 1.5
Gain (dBi)	5-7

PN	GL-128-4
Frequency Range (MHz)	47-230
Impedance (Ω)	75
V.S.W.R	≤ 1.5
Gain (dBi)	3-5



PASSIVE INDOOR ANTENNA



PN	GL-728
Frequency Range (MHz)	47-860
Impedance (Ω)	75
V.S.W.R	≤ 1.5
Gain (dBi)	8-10

PN	GL-628
Frequency Range (MHz)	47-230
Impedance (Ω)	75
V.S.W.R	≤ 1.5
GAIN	5-7



PASSIVE INDOOR ANTENNA



PN	GL-806
Frequency Range (MHz)	47-862
Impedance (Ω)	75
V.S.W.R	≤ 1.5
Gain (dBi)	12-18

PN	GL-913
Frequency Range (MHz)	470-862
Impedance (Ω)	75
V.S.W.R	≤ 1.5
Gain (dBi)	8-10



ACTIVE INDOOR ANTENNA



PN	GL-011B
Frequency Range (MHz)	47-862
Impedance (Ω)	75
V.S.W.R	≤ 1.5
Gain (dBi)	22-26

PN	GL-878
Frequency Range (MHz)	47-862
Impedance (Ω)	75
V.S.W.R	≤ 1.5
Gain (dBi)	23-26



ACTIVE INDDOOR ANTENNA



PN	GL-400
Frequency Range (MHz)	47-862
Impedance (Ω)	75
V.S.W.R	≤ 1.5
Gain (dBi)	25-28

PN	GL-27895K
Frequency Range (MHz)	470-738
Impedance (Ω)	75
V.S.W.R	≤ 1.5
Gain (dBi)	22-26



HDTV OUTDOOR ANTENNA



PN	GL-HD5E-JG
Frequency Range (MHz)	470-862
Impedance (Ω)	75
V.S.W.R	≤ 1.5
Gain (dBi)	8-10

PN	GL-HD8E-JG
Frequency Range (MHz)	470-862
Impedance (Ω)	75
V.S.W.R	≤ 1.5
Gain (dBi)	9-11



HDTV OUTDOOR ANTENNA



PN	GL-HD-074
Frequency Range (MHz)	470-862
Impedance (Ω)	75
V.S.W.R	≤ 1.5
Gain (dBi)	10-12

PN	GL-YG-016
Frequency Range (MHz)	470-862
Impedance (Ω)	75
V.S.W.R	≤ 1.5
Gain (dBi)	10-12





YAGI ANTENNA



PN	GL-922
Frequency Range (MHz)	470-862
Impedance (Ω)	75
V.S.W.R	≤ 1.5
Gain (dBi)	12-15

PN	GL-18E-1
Frequency Range (MHz)	470-862
Impedance (Ω)	75
V.S.W.R	≤ 1.5
Gain (dBi)	12-15



HDTV OUTDOOR ANTENNA

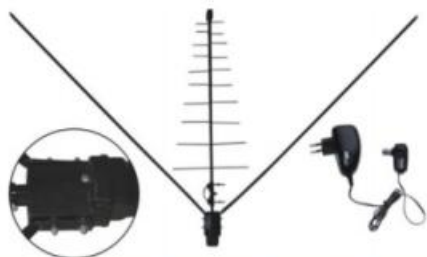


PN	GL-9002
Frequency Range (M Hz)	470-862
Impedance (Ω)	75
V.S.W.R	≤ 1.5
Gain (dBi)	10-12

PN	GL-350A
Frequency Range (M Hz)	470-862
Impedance (Ω)	75
V.S.W.R	≤ 1.5
Gain (dBi)	15-16



AMPLIFIER OUTDOOR ANTENNA

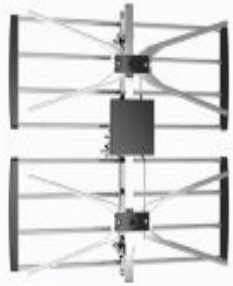


PN	GL-H311-02
Frequency Range (MHz)	470-862
Impedance (Ω)	75
V.S.W.R	≤ 1.5
Gain (dBi)	22-26

PN	GL-24E
Frequency Range (MHz)	47-862
OPERATION VOLTAGE	AC/110/220V
V.S.W.R	≤ 1.5
Gain (dBi)	22-30



TV ANTENNA



PN	GL-ZY002
Frequency Range (MHz)	470-862
Impedance (Ω)	75
FRONT-BACK-RATIO	$\geq 30\text{db}$
Gain (dBi)	7

PN	GL-ZY7EF
Frequency Range (MHz)	470-862
Impedance (Ω)	75
FRONT-BACK-RATIO	$\geq 14\text{db}$
Gain (dBi)	7



TV ANTENNA



PN	GL-ZY900
Frequency Range (MHz)	47-862
Impedance (Ω)	75
FRONT-BACK-RATIO	≥ 24 db
Gain (dBi)	28

PN	GL-ZY21D
Frequency Range (MHz)	470-862
Impedance (Ω)	75
V.S.W.R	≤ 1.5
Gain (dBi)	21



TV SIGNAL AMPLIFIER

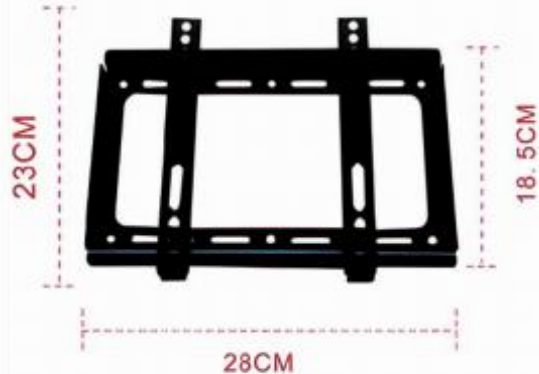


PN	GL-ZYB200
Frequency Range (MHz)	47-862
Impedance (Ω)	75
V.S.W.R	≤ 1.5
Gain (dBi)	28

PN	GL-ZYB410
Frequency Range (MHz)	47-862
Impedance (Ω)	75
V.S.W.R	≤ 1.5
Gain (dBi)	42



TV BRACKET



P/N :GL-1442A

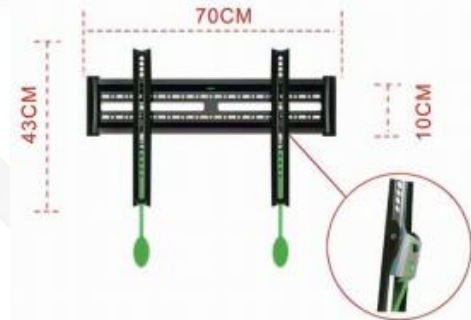
Fist for TV size: 14"-42"

Maxload capacity: 25kg

Distance to wall: 20mm

Max.VESA: 200x200mm

MEAS: 53X31X22cm



P/N:GL-3265C

Fist for TV size:32"-65

Max load capacity:35kg

Distance to wall:26mm

Max.VESA:400x600mm

MEAS:73X25X25cm

QTY:10PCS

G.W.:15.5kg

Plate thickness:1.3-1.5mm

P/N:GL-2670B

Fist for TV size:26"-70"

Max load capacity:55kg

Distance to wall:55mm

Max.VESA:600x400mm

Tilt:+15° /-15

MEAS:71X27X33.5cm

QTY:10PCS

G.W.:21kg

Plate thickness:1.2mm

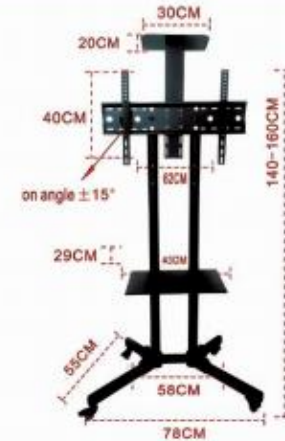


TV BRACKET



P/N:GL-F1032

Fist for TV size:14"-32"
Max load capacity:10kg
Distance to wall:50-290mm
Max.VESA:100x100mm
Tilt: -15°/+15
MEAS:59X42X33cm
QTY:40PCS
G.W.:23kg
Plate thickness:1.2-1.5mm



P/N:L3260

Fist for TV size:32"-60"
Maxload capacity:50kg
Height from ground:1400-1600mm
Max.VESA:400x600mm
Tilt:+ 15°/-15°
Swivel:360°
MEAS:146X35.5X8cm
QTY:1PCS G.W.:12.5kg



P/N:GL-F1742

Fist for TV size:17"-42"
Max load capacity:22kg
Distance to wall:70-450mm
Max.VESA:200x200mm
Tilt: +15°/-15°
Swivel:180°
MEAS:44X32X24.5cm
QTY:10PCS G.W.:13.5kg
Plate thickness:1.2-1.5-1.8mm

TV BRACKET



P/N:GL-Y1427

Fist for TV size:14"-27"

Maxload capacity:10kg*2

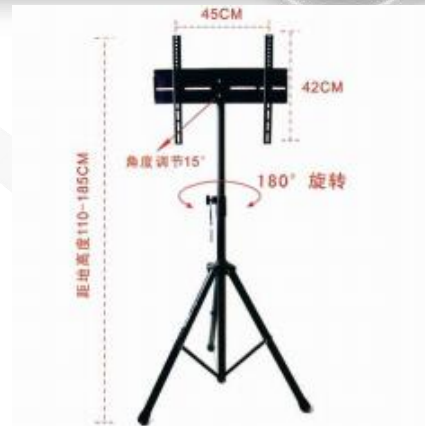
Number of supported screens: 2

Max.VESA:100x100mm

Swivel: 360°

MEAS:54X44X24cm

QTY:6PCS G.W.:18.7kg



P/N:GL-A2655

Fist for TV size:26"-55"

Maxload capacity:30kg

Height from ground:1100-1850

Max.VESA:400x400mm

Swivel:360°

MEAS:97X16X14cm

QTY:1PCS

G.W.:3.8kg



P/N:GL-Z3760

Fist for TV size:37"-60"

Max load capacity:45kg

Height from ground:690mm

Max.VESA:500mm

MEAS:59X52X30cm

QTY:10PCS

G.W.:17.5kg

Plate thickness:1.8-2.0mm



GLOBAL REACH



OUR LOCATION

Room826, Floor 8, BLDG 13,
University Science Park(East),
Zhengzhou City, P.R.Henan, China

CONTACT

+86-371-60911368

+86-371-65097986

Current Location



Google Maps



LinkedIn



Youtube



Email



Get Directions



Facebook



WhatsApp



Website